

Easy Foal

SUPPLY AND INSERT EASYFOAL SIM CARD

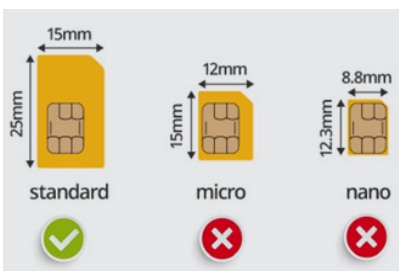
Procedure

In order to send alerts, the EasyFoal collector must be equipped with a SIM card activated on the networks of the place where the device will be installed.

SIZE	PROVIDER	COVERAGE	TECHNOLOGY	MOBILE PLAN	PIN CODE
Standard (neither micro, nor) nano 1	Choose an operator present in the country .	Ensure that the chosen operator's network provides sufficient and continuous coverage of the area where the device will be located.	Minimum 2G operation.	At least call and SMS (avoid prepaid cards, an exhausted package would not allow the transmission of alerts)	The card must not have a PIN code , or it must be deactivated before being inserted into the collector (by inserting it into a mobile phone and changing the settings)

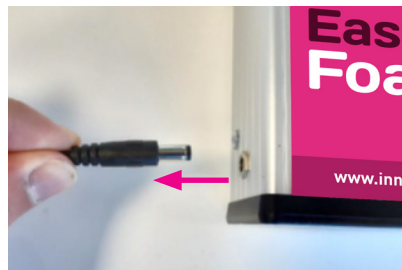
1

Get a standard size SIM card.



2

Switch off the collector.



3

Deactivate the PIN code of the SIM card to be inserted.



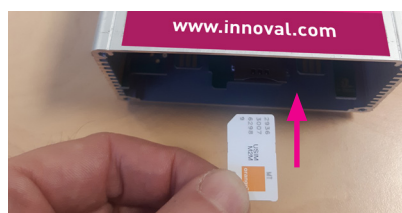
4

Open the collector by unscrewing the 4 cover screws.



5

Insert the SIM card into the slot until it stops. Make sure that you insert the card in the correct direction.



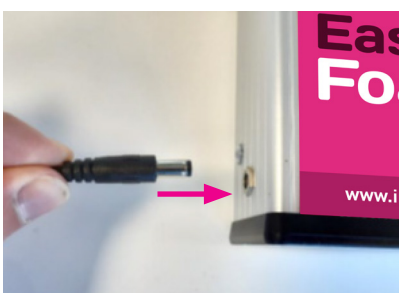
6

Close the cover. Be careful not to screw it on too tightly.



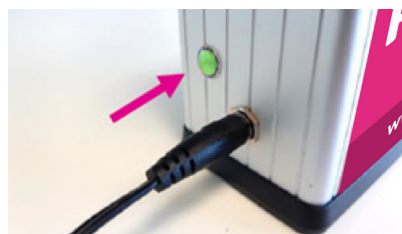
7

Switch on the collector.



8

Wait a few minutes until the LED flashes green every 3 seconds.



9

Set up the system using the Quick Guide.



